



The Ultra High Density Fiber Optic Patch Panel UHD ORMP 1U and UHD ORMP 2U are pre-assembled according to your exact specifications to begin splicing right out of the carton, so it provides substantial labor savings. Each patch panel is made of rugged alu-zinc metal and has a durable powder-coat finish coming in light gray color. The craft-friendly Fiber Optic Trays COYOTE® and an integrated fiber storage allow comfortable assembly.

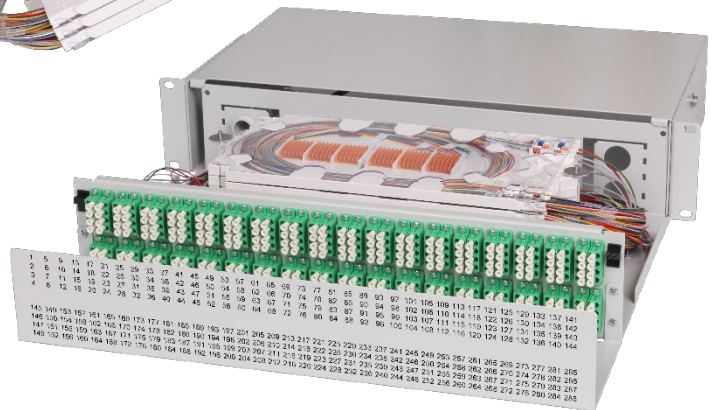
- ▶ Capacity up to 144 splices (for 1U version)
- ▶ Capacity up to 288 splices (for 2U version)
- ▶ Capacity up to 72× SC / 144× LC connector (for 1U version)
- ▶ Capacity up to 144× SC / 288× LC connector (for 2U version)
- ▶ Increased corrosion resistance (alu-zinc material)
- ▶ High connector density (UHD = Ultra High Density)
- ▶ Removable patchcord support
- ▶ Depth adjustable 19" mounting brackets
- ▶ Large Fiber Optic Trays with a transparent lid
- ▶ Removable Fiber Optic Trays to facilitate easy installation and maintenance
- ▶ Space for a fiber storage under the trays
- ▶ Optional Splice Holders (heat-shrink, crimp, ribbon, etc.)
- ▶ Available lower density



Ultra High Density Fiber Optic Patch Panel UHD ORMP 1U 144LC



Ultra High Density Fiber Optic Patch Panel UHD ORMP 1U 144LC (removed trays)



Ultra High Density Fiber Optic Patch Panel UHD ORMP 2U 288LC

Technical Specifications

Inputs / Outputs	2× / 4× PG 16 (8–16 mm)
Material	Powder coated alu-zinc
Color	Light gray RAL 7035
Dimensions	483 × 43 / 86 × 350 mm
Weight	4.2 / 5.4 kg

Ordering Codes

1	Ultra High Density Fiber Optic Patch Panel UHD ORMP 1U (incl. 3 Fiber Optic Trays)	85L8.00/003XF
2	Ultra High Density Fiber Optic Patch Panel UHD ORMP 2U (incl. 6 Fiber Optic Trays)	85L8.00/004XF
For other variants, please, contact our sales department.		

More information: <https://www.micostelcom.com/ultra-high-density-fiber-optic->